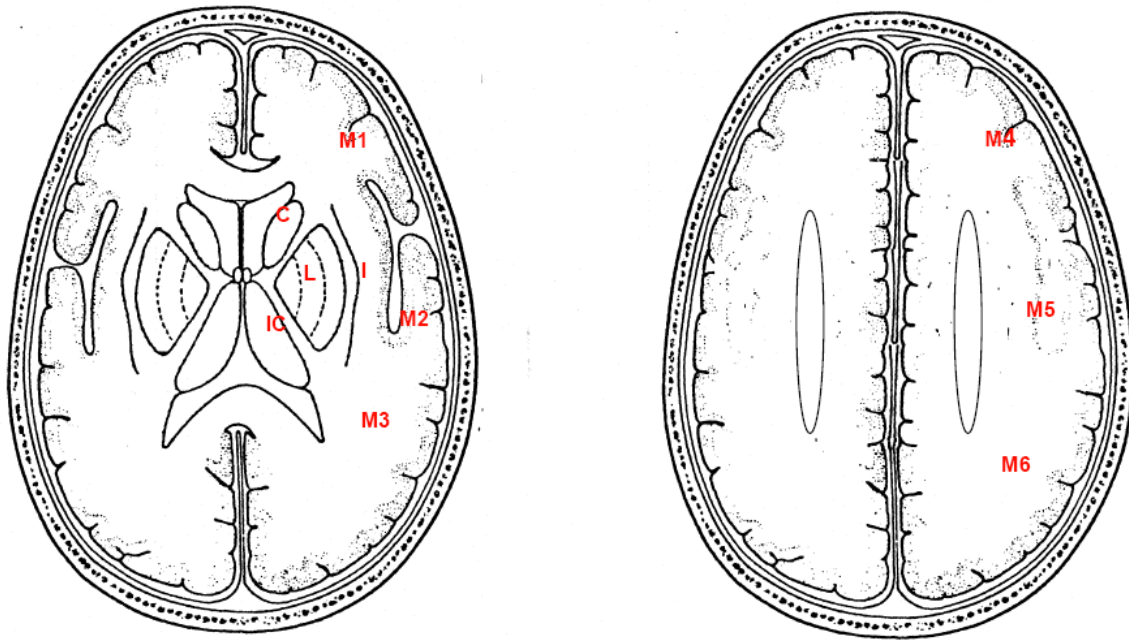


ASPECTS scoring:

10 = normal; subtract one point for hypodensity in each of the 10 regions noted below. See also- www.aspectsinstroke.com



Thrombolysis in Cerebral Infarction (TICI) Scoring for Post-Treatment Reperfusion:

- Grade 0 =** No perfusion
- Grade 1 =** Perfusion past the initial obstruction, but limited distal branch filling with little or slow distal perfusion
- Grade 2a =** Perfusion of <67% of the vascular distribution of the occluded artery (e.g., filling and perfusion through 1 M2 division)
- Grade 2b =** Perfusion of ≥67% of the vascular distribution of the occluded artery (e.g., filling and perfusion through 2 or more M2 divisions).
- Grade 3 =** Full perfusion with filling of all distal branches

NIH Stroke Scale (NIHSS)

<p>1a. Level of consciousness</p> <ul style="list-style-type: none">0 alert1 drowsy2 stuporous3 coma <p>1b. LOC questions (month, age)</p> <ul style="list-style-type: none">0 both correct1 one correct2 incorrect <p>1c. LOC commands (close eyes, make a fist)</p> <ul style="list-style-type: none">0 both correct1 one correct2 incorrect <p>2. Best gaze</p> <ul style="list-style-type: none">0 normal1 partial gaze palsy2 forced deviation <p>3. Visual fields</p> <ul style="list-style-type: none">0 no visual loss1 partial hemi2 complete hemi3 bilateral hemi <p>4. Facial palsy</p> <ul style="list-style-type: none">0 normal1 minor2 partial3 complete <p><i>Note: 9's are not added in the final score</i></p>	<p>5ab-6ab. Motor (L/R arm, L/R leg)</p> <ul style="list-style-type: none">0 no drift1 drift2 can't resist gravity3 no effort against gravity4 no movement9 amputation/joint fusion <p>7. Limb ataxia (FNF, HKS)</p> <ul style="list-style-type: none">0 absent1 present in one limb2 present in 2 limbs <p>8. Sensation (pin)</p> <ul style="list-style-type: none">0 normal1 partial loss2 severe loss <p>9. Best language</p> <ul style="list-style-type: none">0 no aphasia1 mild-mod aphasia2 severe aphasia3 mute <p>10. Dysarthria</p> <ul style="list-style-type: none">0 none1 mild-mod2 near to unintelligible or worse/mute9 intubated/barrier <p>11. Extinction and inattention</p> <ul style="list-style-type: none">0 no neglect1 partial neglect2 complete neglect
---	--

Modified Rankin Scale (mRS):

0 – no symptoms at all

1 – no significant disability despite symptoms; able to carry out all usual duties and activities

2 – slight disability: unable to carry out all previous activities but able to look after own affairs without assistance

3 – moderate disability: requiring some help, but able to walk without assistance

4 – moderately severe disability: unable to walk without assistance and unable to attend to own bodily needs without assistance

5 – severe disability: bedridden, incontinent and requiring constant nursing care

Glasgow Coma Scale (GCS):

<i>Eye opening</i>	<i>Motor</i>	<i>Verbal</i>	<i>Points</i>
None	None	None	1
To pain	Extension with pain	Unintelligible	2
To command	Flexion with pain	Inappropriate words	3
Spontaneously	Withdraws to pain	Confused conversation	4
	Localizes to pain	Oriented and appropriate	5
	Obeys commands		6

ICH Score:

GCS	13-15	0 point
	5-12	1 point
	3-4	2 points

Age \geq 80	1 point
Infratentorial	1 point
Volume > 30 cc	1 point
IVH	1 point